

Trafox Superintend®



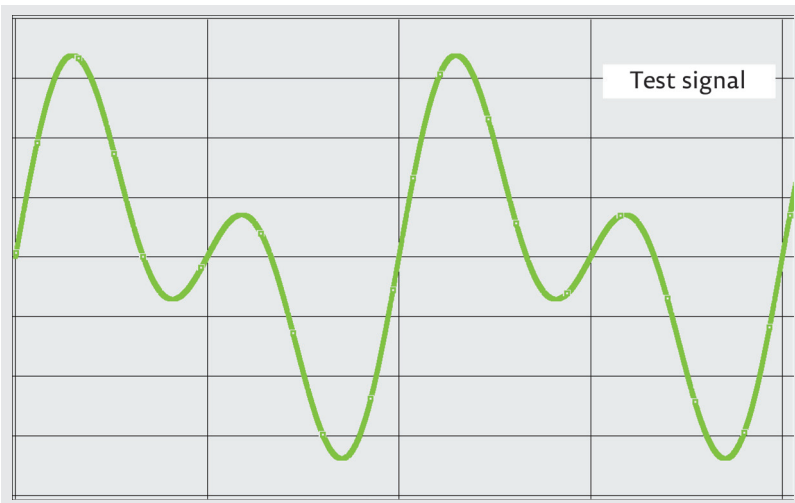
LIM
Insulation Monitoring System
for Photovoltaic applications

Line Insulation Monitoring System

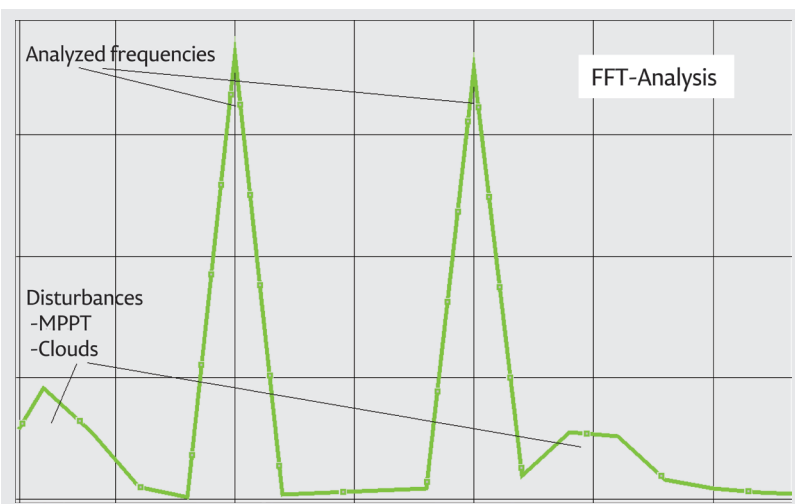


NEW! LINE INSULATION MONITORING SYSTEM FOR PV APPLICATIONS!

- Immune against disturbances (clouds and frequency disturbances), FFT
- For voltages up to 1100 VDC
- Possibility to monitor current and temperature
- Remote monitoring and alarms over the Internet
- Quality and reliability from Finland



- Test signal adapted to the PV system parameters, observing also possible disturbances
- Test signal based on two sinusoidal waves of different frequencies



- Measured test current FFT analyzed and $C_{insulation}$ and $R_{insulation}$ calculated
- Improved immunity against disturbances of MPPT, clouds and shadows
- Fast and accurate measurements on wide range

Power supply specifications

Nominal Input voltage	110-240 VAC, 110-300 VDC (Schurter 0001.2503 (T800mA))
Nominal input current	0.04 A at 230 VAC
Line frequency	48 ~ 62 Hz

Measurement specification

Maximum DC input voltage	1100 VDC
Maximum AC input voltage	793 VAC
Resistance measurement range	500 Ω...1 MΩ With better than 15% accuracy
Capacitance measurement range	1 uF...2000 uF
Measurement time	300 s @ 10 kΩ, 2000 uF
Alarm range	500 Ω...100kΩ
System frequency	DC, 10 Hz - 460 Hz
Measuring impedance	40 kΩ...55 kΩ
Test voltage	50 Vp

Three alarm contacts with settable limits (potential free changeover)

Alarm contact	5A at 250VAC
Pre-alarm contact	5A at 250VAC
Transformer alarm contact	5A at 250VAC

Other functions

RS-485 serial connection for current loop transmitter	
Modbus/TCP interface for remote monitoring and controlling	
Inverter/transformer temperature monitoring	-40...+125 °C (with external NTC or PT100)
DC Current measurement	With external current transducer
Memory logging with microSD card slot	
Analog output of resistance measurement	0...20 mA, with current loop transmitter CLT-01
Easy and explanatory user interface	LEDs and backlit LCD display
Self-testing automatic	Continuous
Self-testing immediate	With TEST button

Standards

Measurements	IEC 61557-8, IEC 62109-2
Safety	IEC 61010-1
EMC	IEC 61326-2-4

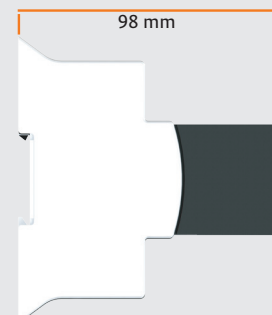
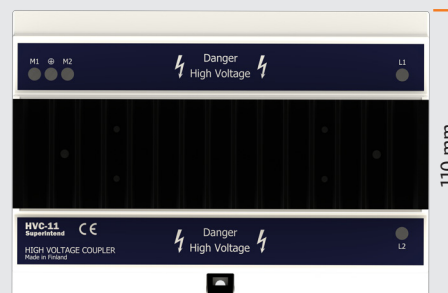
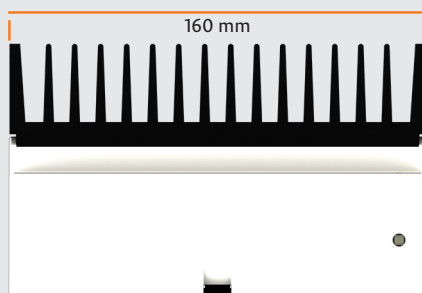
General

Dimension (W x L x D)	160 x 110 x 62 mm
Case Material	Plastic
Mounting interface	DIN rail clamp

IM-01PV

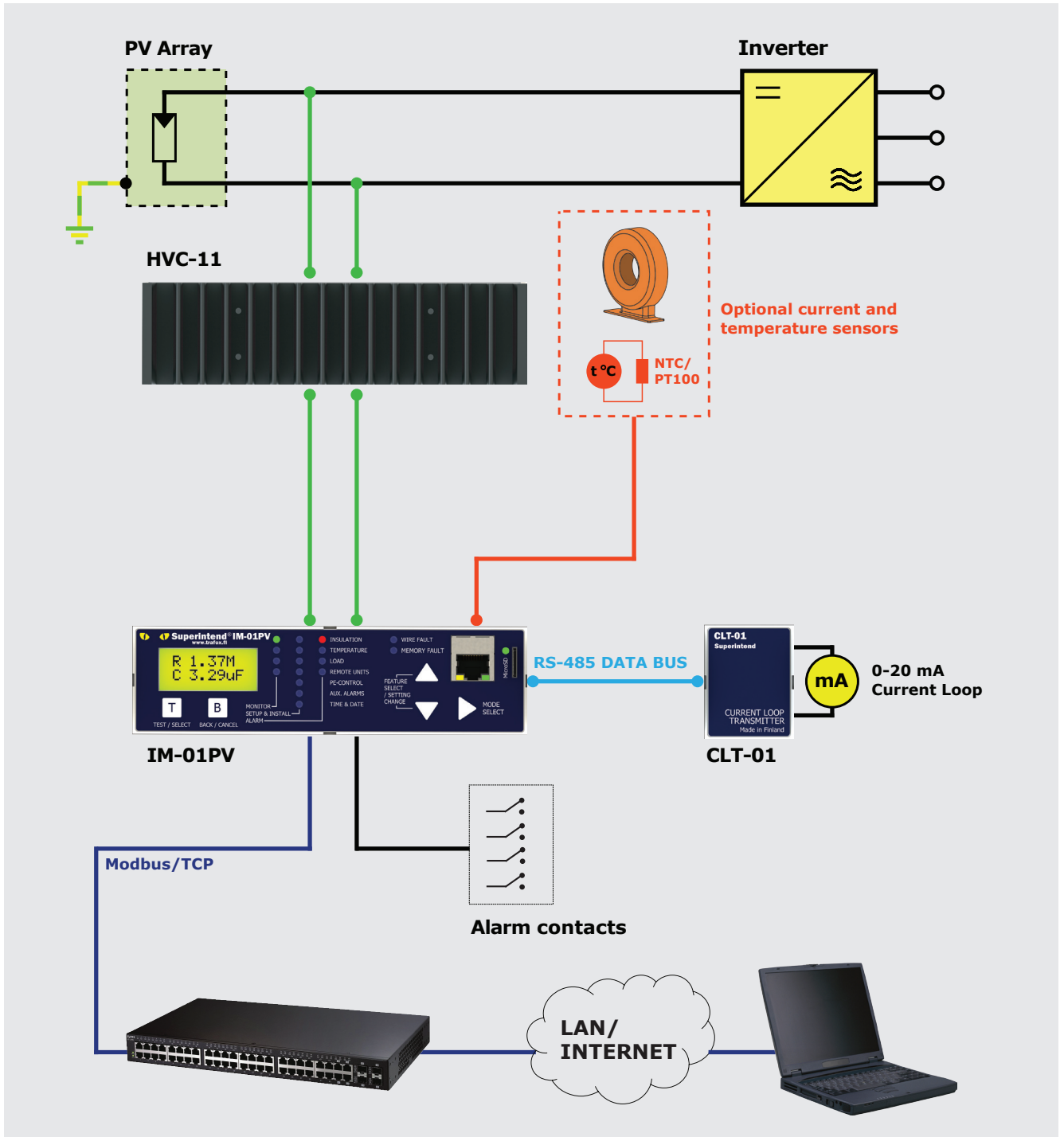


HVC-11



CLT-01





Muuntosähkö

Trafox is a brand of Muuntosähkö Oy. We develop, manufacture and customise high-quality transformers, chokes, filters and Trafox Superintend® monitoring devices for a large number of applications.

MUUNTOSÄHKÖ OY TRAFIX
 P.O. Box 10 | FI-00621 Helsinki | Tel. +358 207 933 700 | Fax +358 207 933 746 | sales@trafox.fi



www.trafox.fi